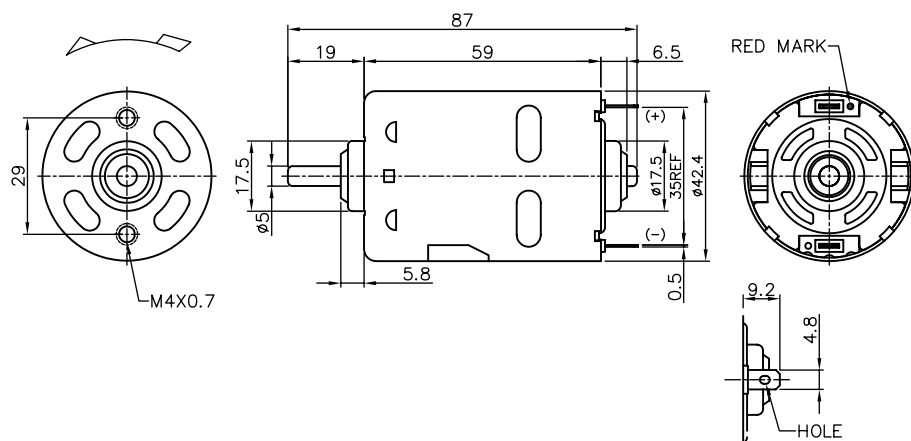


750 series Ø42.4 mm 11-107 W

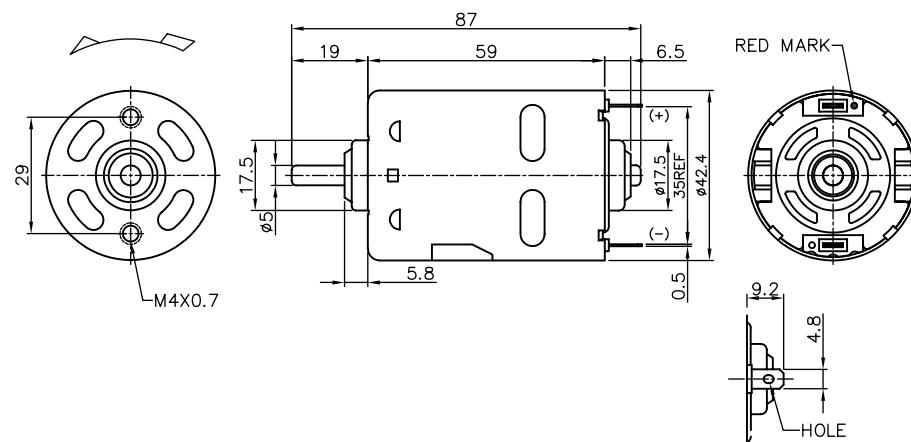


Model - ☐ - ☐
 Cabron brush = C V = Varistor
 Metal brush = M C = Capacitor

MOTOR DATA

Part name	750-32160-C	750-4570-C	750-8028-C	750-9013-C
Diameter (mm)	42.4	42.4	42.4	42.4
Lenth (mm)	59	59	59	59
Nominal voltage (V)	12	12	12	6
Nominal speed (rpm)	2600	6300	15500	16800
Nominal torque (mNm)	37.9	51.9	66.0	46.7
Nominal current A	1.4	4.3	12.8	19.3
No load speed (rpm)	3200	7500	18800	19000
No load current A	0.36	0.75	2.60	4.00
Stall torque (mNm)	209.8	305.9	480.4	342.2
Starting current (A)	6.1	22.5	92.1	112.2
Output (W)	11	35	107	83
Efficiency (%)	65	69	70	72
Operating temperature deg. C	-10..+60	-10..+60	-10..+60	-10..+60

755 series Ø42.4 mm 14-144 W



Model - ☐ - ☐
 Cabron brush = C V = Varistor
 Metal brush = M C = Capacitor

MOTOR DATA

Part name	755-8512F-C	755-5027F-C	755-3262-C	755-19175-C
Diameter (mm)	42.4	42.4	42.4	42.4
Lenth (mm)	59	59	59	59
Nominal voltage (V)	9.6	12	24	36
Nominal speed (rpm)	14000	8400	7400	3900
Nominal torque (mNm)	98.2	45.7	43.3	33.6
Nominal current A	19.8	4.9	2.1	0.6
No load speed (rpm)	16700	10000	8900	4800
No load current A	2.80	1.40	0.45	0.18
Stall torque (mNm)	635.3	319.4	301.9	183.3
Starting current (A)	112.6	29.3	12.2	2.7
Output (W)	144	41	34	14
Efficiency (%)	76	71	70	64
Operating temperature deg. C	-10..+60	-10..+60	-10..+60	-10..+60