

PRODUCT DATA SHEET

ET1183 Medium Speed Torquemeter

Model Rating

Maximum Continuous Torque: 180Nm

Maximum Continuous Speed: 42000rpm

Shaft Rating Range

16Nm to 180Nm

Accuracy at Full Scale Torque

0.12% Application Dependant

Specification

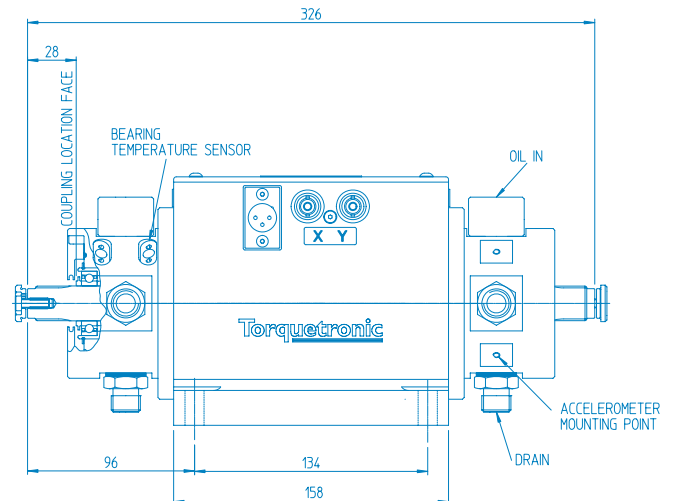
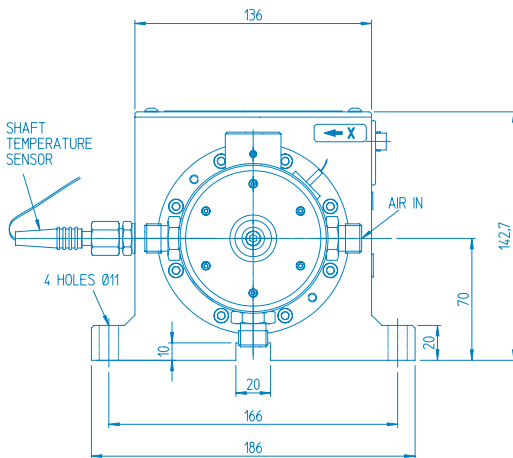
Number of Bearings	4
Bearing Temp. Quantity	1 Per Bearing
Bearing Temp. Monitoring	See GDS01
Bearing Lubrication Type	Grease
Accelerometer Mounting	2-off Each End. See GDS01
Rotastat Voltage	See GDS01

Environment

Storage Temperature	-50 to 85°C
Operating Temperature	-20 to 80°C



Outline Drawing



Overall Weight 13kg

For more detail see drawings

INST02-1183-00	For installation drawing
02-1183-00	For itemized assembly drawing
E850001	For typical electrical connection drawing
03-1183-00	For drawing of optional calibration tooling
06-1185-00 & 06-1185-01	For optional bearing removal and refitting tooling



Torquemeters Limited

Ravensthorpe, Northampton, NN6 8ET, United Kingdom.
Telephone: +44 (0)1604 770232 Fax: +44 (0)1604 770778
email: info@torquemeters.com www.torquemeters.com

Torquemeters LIMITED
high performance test & measurement systems

Coupling Specification

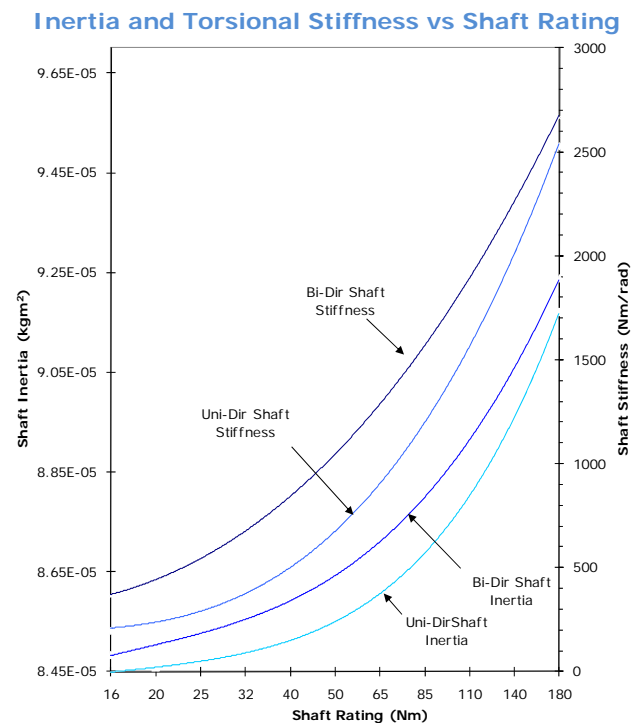
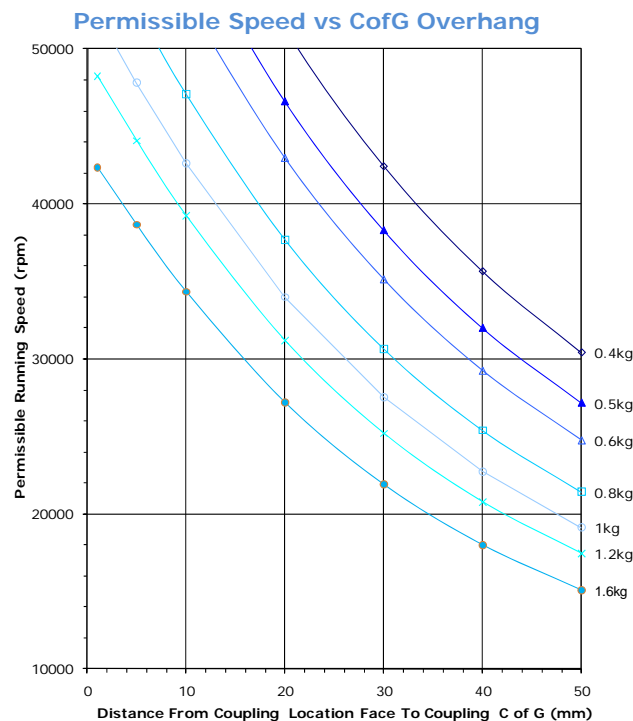
Recommended Coupling	TORDISC LM118
Shaft End Type	Splined DIN 5480 – 20 x 1 x 18 x 7H 8f
Shaft Nominal Diameter	20mm

Bearing Lubrication Requirements

Lubrication type	Synthetic Grease
Grease type	Lubcon L182 Grease
Grease quantity	0.16 ml

Cartridge Style

Interchangeable torsion shafts for ET1183 supplied with bearings as a cartridge assembly



Please refer to Technical Data Sheet (TDS01) for details of Torquetronic Torquemeter phase shift system.
Please refer to Generic Data Sheet (GDS01) for details of Torquemeter options.