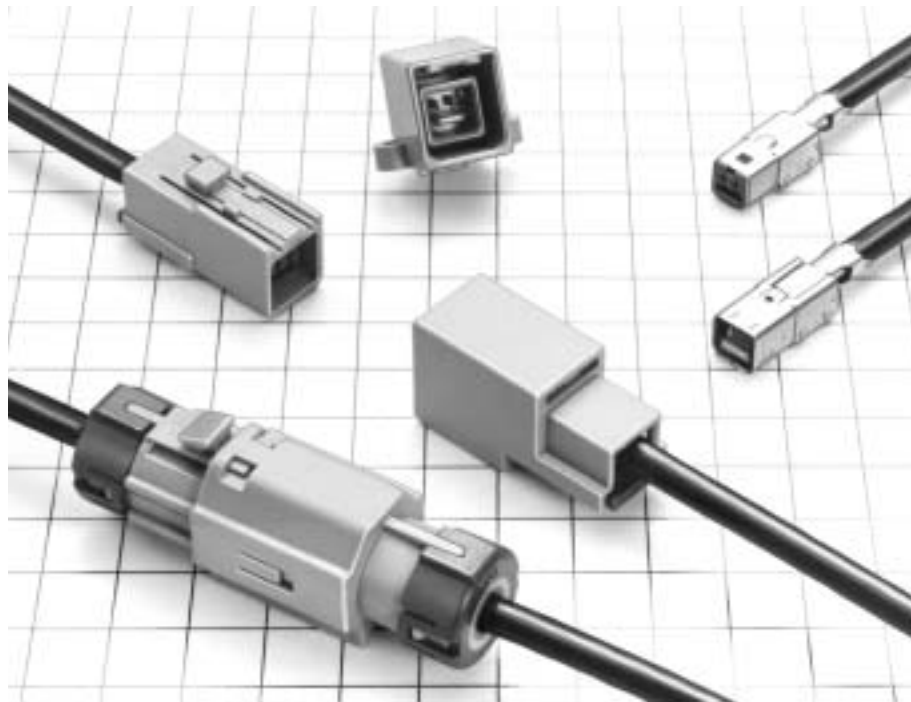


# GT14 Series

— Connectors for coaxial cables —

<Several types and configurations: In-line, board mounted, water-proof>



## ■ Features

- The signal lines use pressure welding wiring and the shielded braid uses crimp wiring to permit batch wiring which enables a great reduction in the number of tasks.
- All surface shielded construction.

## ■ Applications

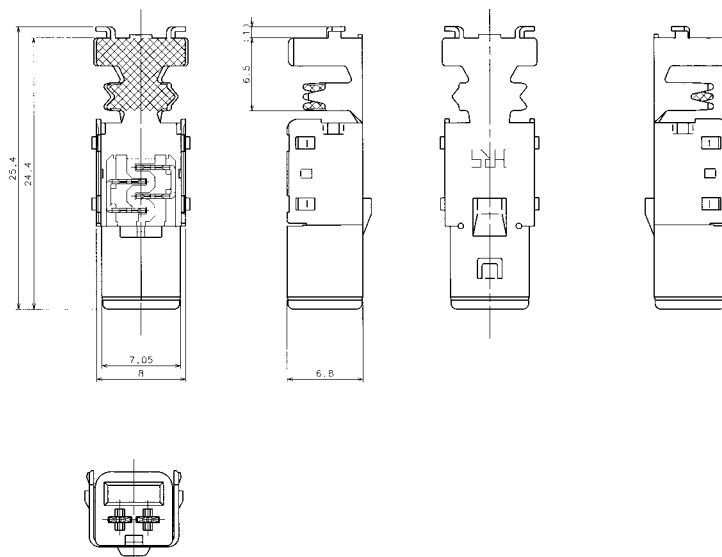
In-car LAN, sensors, etc.



## Terminals for 2-Conductor Shielded Cable

### F Connectors

#### ● F Terminals

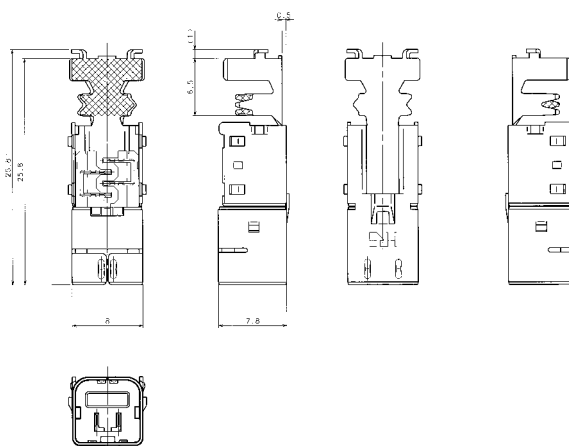


Part Number	CL No.	Wire Size	Inner Insulation Diameter	Outer Diameter
GT14-20/3.8-4.8SC	764-0013-9	0.5 mm <sup>2</sup>	3.5 to 3.7 mm	4.6 to 5.0
GT14-22/3.4-4.4SC		0.3 mm <sup>2</sup>	3.1 to 3.3 mm	4.2 to 4.6

Item	Material	Finish	Color
Insulator	PBT	—	Dark gray
IDC Terminal	Beryllium Copper	Tin plating	—
Outer Terminal	Brass	Tin plating	—

### M Terminals

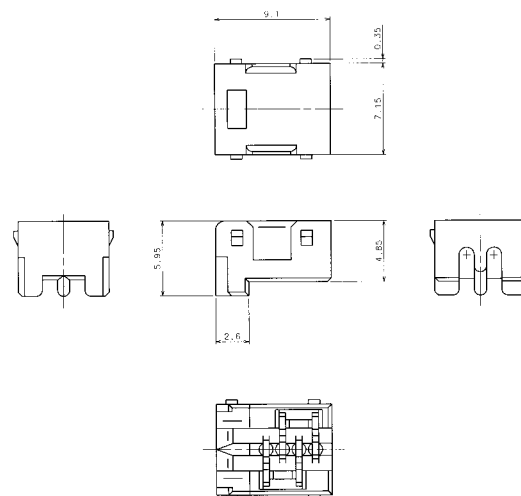
#### ● M Terminals



Part Number	CL No.	Wire Size	Inner Insulation Diameter	Outer Diameter
GT14-20/3.8-4.8PC	764-0012-6	0.5 mm <sup>2</sup>	3.5 to 3.7 mm	4.6 to 5.0
GT14-22/3.4-4.4PC		0.3 mm <sup>2</sup>	3.1 to 3.3 mm	4.2 to 4.6

Item	Material	Finish	Color
Insulator	PBT	—	Dark gray
IDC Terminal	Beryllium Copper	Tin plating	—
Outer Terminal	Brass	Tin plating	—

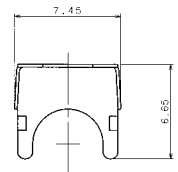
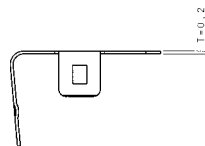
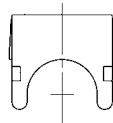
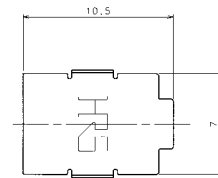
#### ● Protector (Used with both male and female)



Part Number	CL No.	Outer Diameter	Material	Color
GT14-1.3PT	764-0007-6	1.3 mm	PBT	Dark gray
GT14-1.1PT		1.1 mm	PBT	Dark gray



● Shield Cover (Used with both male and female)



Part Number	CL No.	Material	Finish
GT14-SB	764-0006-3	Brass	Tin plating

\* Use of this product provides better shielding effectiveness.

## Applicable Cable

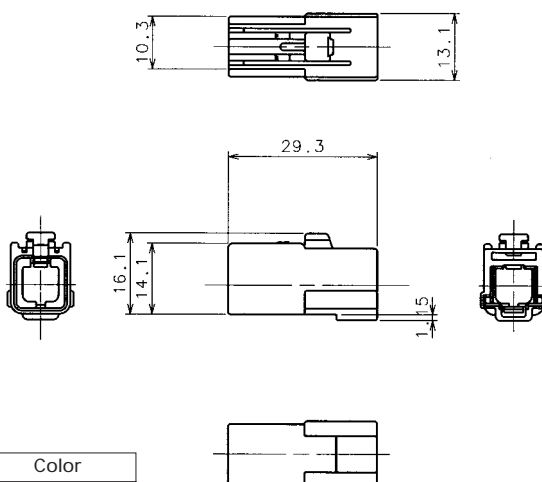
Manufacturer	Name	Wire size	Remarks
Hitachi Cable, Ltd.	CAVUS-SW2 X 0.5 mm <sup>2</sup> Hitachi Part Number SP60-12637	0.5mm <sup>2</sup>	_____
Hitachi Cable, Ltd.	CAVUS-VX-SW2 X 0.5 mm <sup>2</sup> Hitachi Part Number SP60-12667Y	0.5mm <sup>2</sup>	



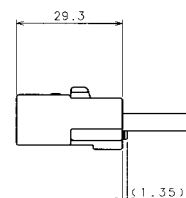
## For Double-Conductor coaxial shielded cable

### F Connectors

#### ● Housing



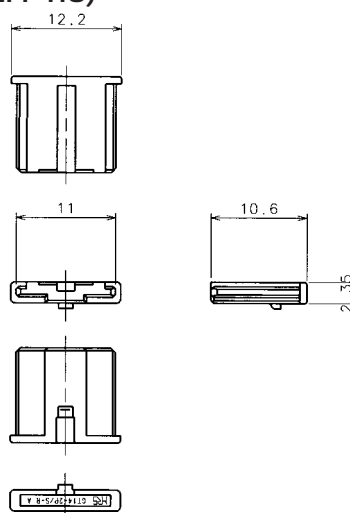
◆ Shown with inserted retainer



Part Number	CL No.	Material	Color
GT14-2S-HU	764-0009-1	PBT	Light gray

Used with separate retainer.

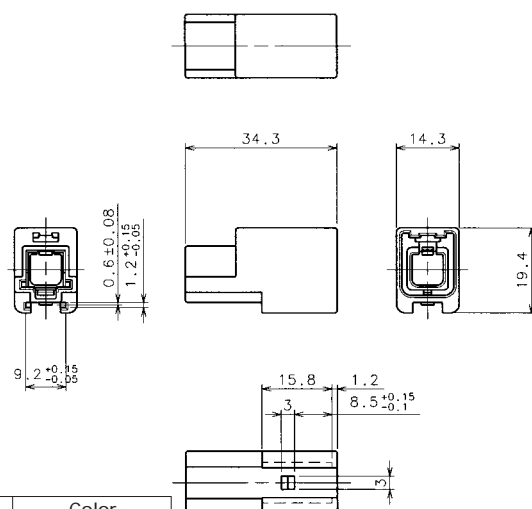
#### ● Retainers (Used with GT14-2S-HU and GT14-2PP-HU)



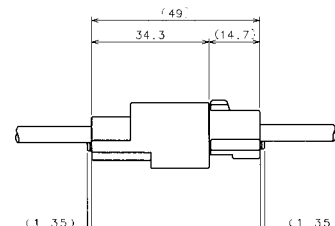
Part Number	CL No.	Material	Color
GT14-2P/S-R	764-0010-0	PBT	Dark gray

### M Connectors

#### ● Housing



◆ Fully mated connector assemblies

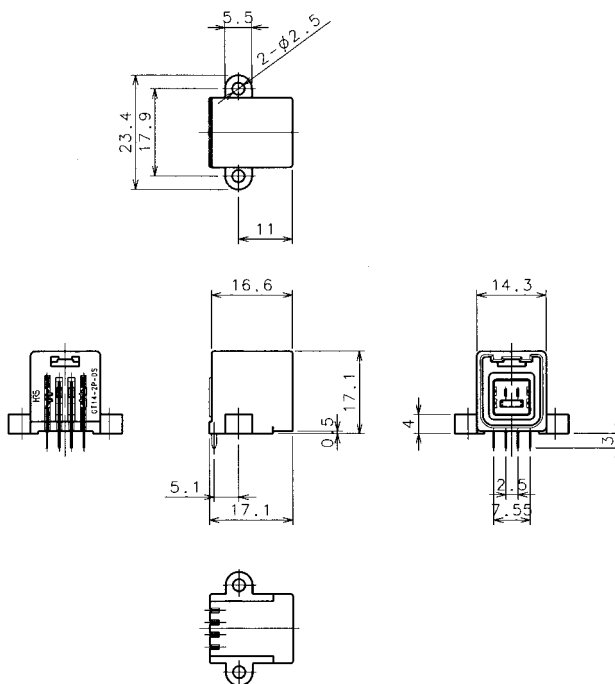


Part Number	CL No.	Material	Color
GT14-2PP-HU	764-0008-9	PBT	Light gray

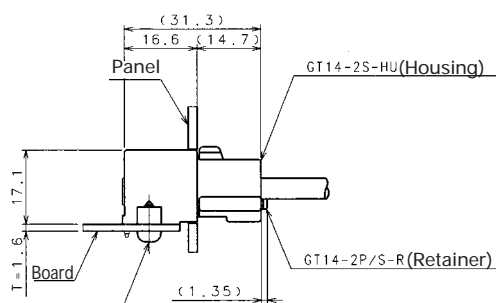
Used with separate retainer.



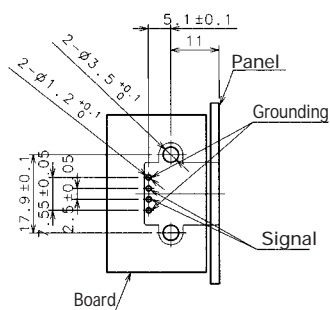
## ● Printed Circuit Board Type



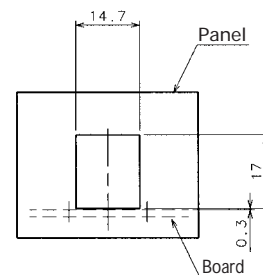
### ◆ Fully mated connector assemblies



### ◆ Recommended PCB Mounting Pattern



### ◆ Recommended Panel Cut-out



Part Number	CL No.	Item	Material	Finish	Color
GT14-2P-DS	764-0011-3	Housing	PBT	—	Light gray
		Signal Terminal	Brass	Tin plating	—
		Outer Terminal	Copper alloy	Tin plating	—

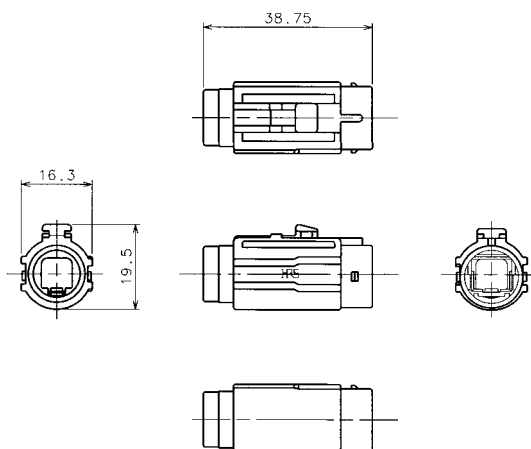
Use mounting screw of M3 with nominal diameter 3L-6 (for a board thickness of 1.6mm)



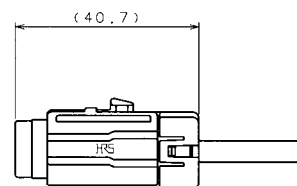
## Double-Conductor Coaxial Cable - Waterproof Type

### F Connectors

#### ● Housing



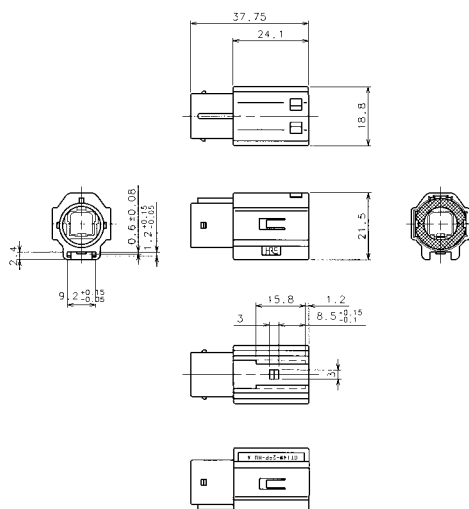
◆ Shown with inserted retainer



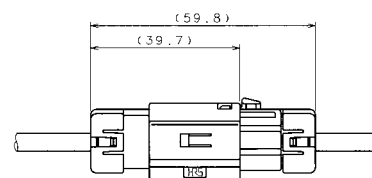
Part Number	CL No.	Material	Color
GT14W-2S-HU	764-0002-2	PBT	Light gray

### M Connectors

#### ● Housing

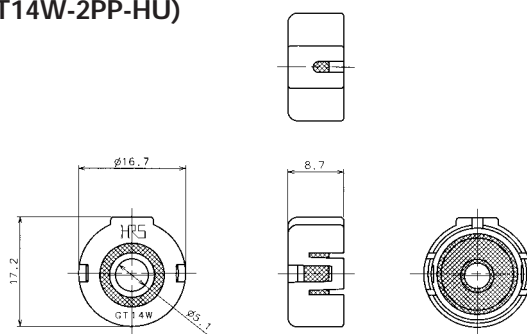


◆ Fully mated connector assemblies



Part Number	CL No.	Item	Material	Finish
GT14W-2PP-HU	764-0001-0	Housing	PBT	Light gray
		Connector Seal	Silicon rubber Compound	White

#### ● Retainers (used with GT14W-2S-HU and GT14W-2PP-HU)



Part Number	CL No.	Item	Material	Finish
GT14W-1P/S-4.8R	764-0003-5	Retainer	PBT	Dark gray
		Wire seal	Silicon rubber compound	Light blue

Outer diameter of the cable must be within 4.7 to 4.0mm. Consult nearest HRS representative for other diameter.