

## 10/100BASE MODUES

## 10/100BASE TRANSFORMER



### FEATURES

Designed to meet IEEE 802.3 requirements.

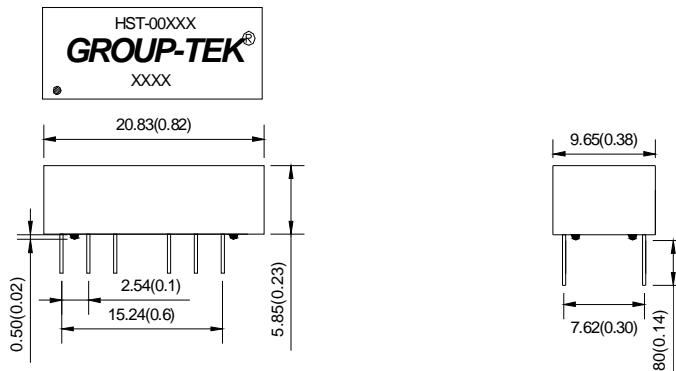
Primary inductance(Lp)350uHmin.@ 100KHz,0.1Vrms,8mA .

Electrical Specification@25						Operating Temperature 0 to 70				
Part No.	Insertion loss (dB max) 1-125MHz	Return loss (dB typical .) MHz		CMRR (dB min .) MHz		Cross talk (dB min .) MHz		Isolation Voltage (Vrms min)	Package	Schematic
		0.1-60	60-100	0.1-60	60-100	0.1-60	60-100			
HST-004DD	-1.1	-18TX	-13TX	-42TX	-40TX	-40	-38	1500	a	I
	-1.1	/-17RX	/-15RX	/-40RX	/-35RX					
HST-005DT	-1.1	-18TX	-13TX	-42TX	-40TX	-40	-38	1500	a	A
	-1.1	/-17RX	/-15RX	/-40RX	/-35RX					
HST-005DC	-1.1	-18TX	-13TX	-42TX	-40TX	-40	-38	1500	a	B
	-1.1	/-17RX	/-15RX	/-40RX	/-35RX					
HST-005D	-1.1	-18TX	-13TX	-42TX	-40TX	-40	-38	1500	a	C
	-1.1	/-17RX	/-15RX	/-40RX	/-35RX					
HST-005DD	-1.1	-18TX	-13TX	-42TX	-40TX	-40	-38	1500	a	D
	-1.1	/-17RX	/-15RX	/-40RX	/-35RX					
HST-005DH	-1.1	-18TX	-13TX	-42TX	-40TX	-38	-35	1500	a	K
	-1.1	/-17RX	/-15RX	/-38RX	/-32RX					
HST-005DF	-1.1	-18TX	-13TX	-42TX	-40TX	-40	-38	1500	a	E
	-1.1	/-17RX	/-15RX	/-40RX	/-35RX					
HST-005S	-1.1	-18TX	-13TX	-42TX	-40TX	-40	-38	1500	b	C
	-1.1	/-17RX	/-15RX	/-40RX	/-35RX					
HST-005SF	-1.1	-18TX	-13TX	-42TX	-40TX	-40	-38	1500	b	E
	-1.1	/-17RX	/-15RX	/-40RX	/-35RX					
HST-006SF	-1.1	-18TX	-13TX	-42TX	-40TX	-40	-38	1500	b	J
	-1.1	/-17RX	/-15RX	/-40RX	/-35RX					
HST-005AS	-1.1	-18TX	-13TX	-42TX	-40TX	-40	-38	1500	c	C
	-1.1	/-17RX	/-15RX	/-40RX	/-35RX					
HST-005BS	-1.1	-18TX	-13TX	-42TX	-40TX	-40	-38	1500	c	F
	-1.1	/-17RX	/-15RX	/-40RX	/-35RX					
HST-007D	-1.1	-18TX	-13TX	-42TX	-40TX	-40	-38	1500	a	G
	-1.1	/-17RX	/-15RX	/-40RX	/-35RX					
HST-007S	-1.1	-18TX	-13TX	-42TX	-40TX	-40	-38	1500	b	G
	-1.1	/-17RX	/-15RX	/-40RX	/-35RX					
HST-011S	-1.1	-18TX	-13TX	-42TX	-40TX	-40	-38	1500	b	H
	-1.1	/-17RX	/-15RX	/-40RX	/-35RX					

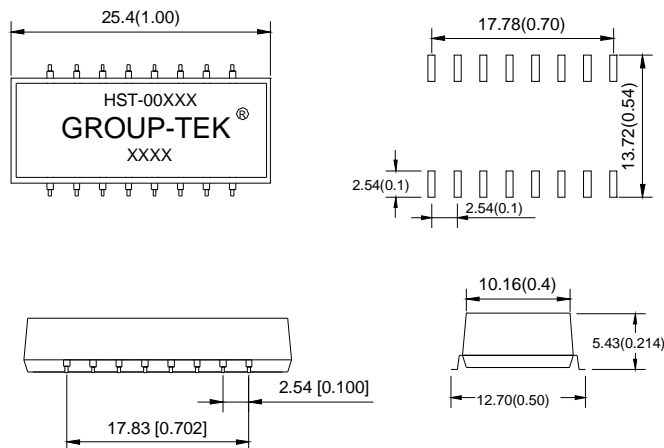
## 10/100BASE TRANSFORMER

**Dimension:** mm(inch)+/-0.25(0.01)

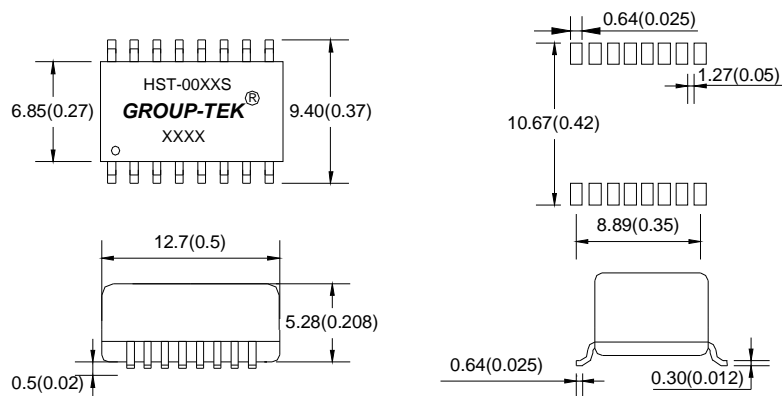
a



b



c

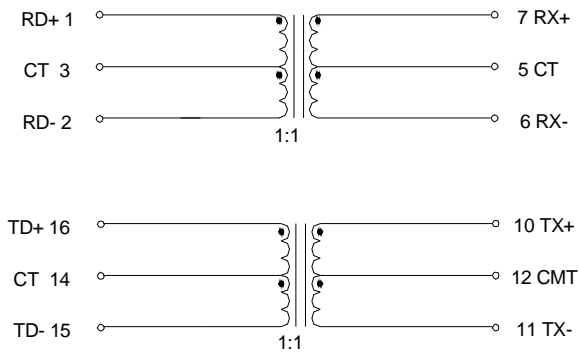


## 10/100BASE MODUES

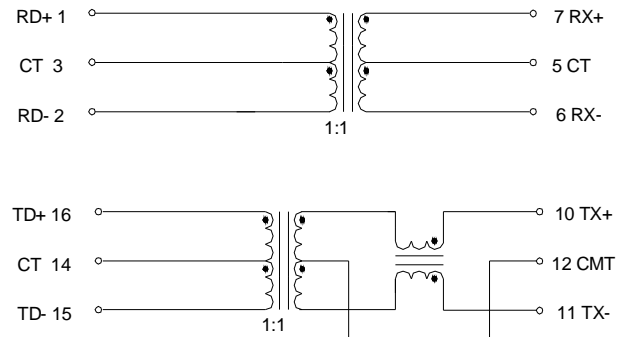
### 10/100BASE TRANSFORMER

#### Schematic

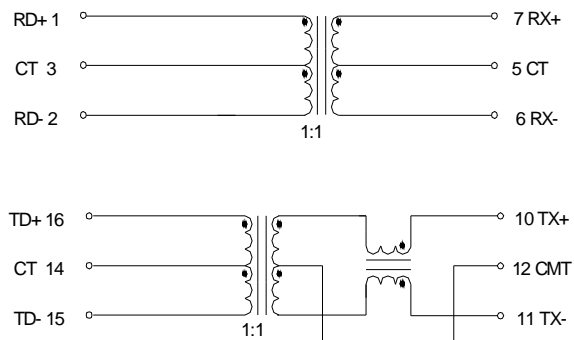
A



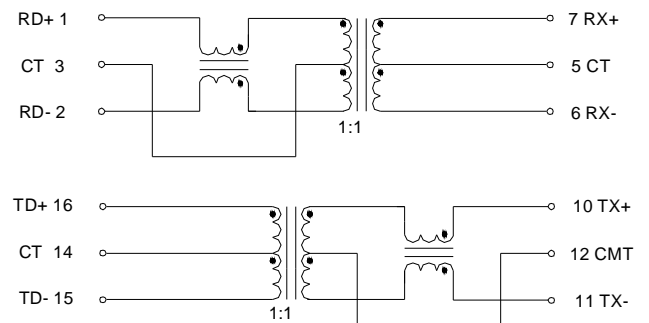
B



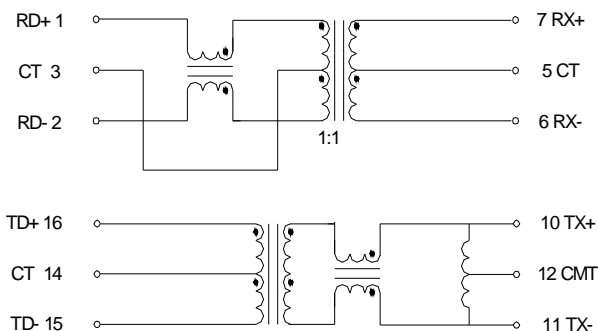
C



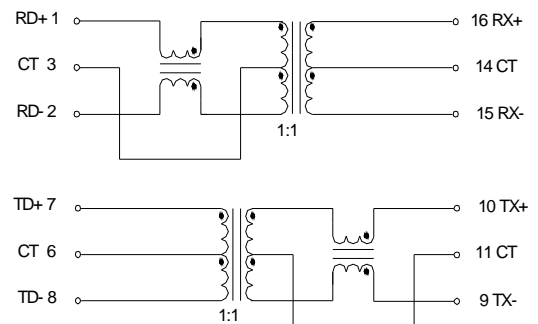
D



E



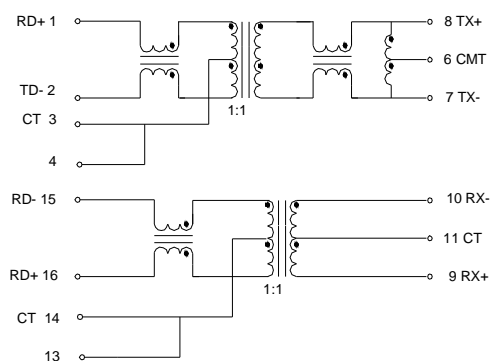
F



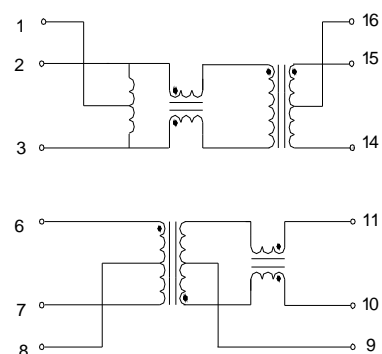
## 10/100BASE TRANSFORMER

### Schematic

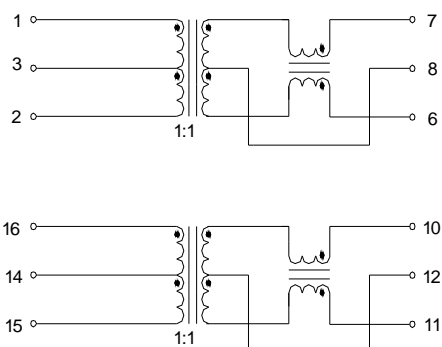
G



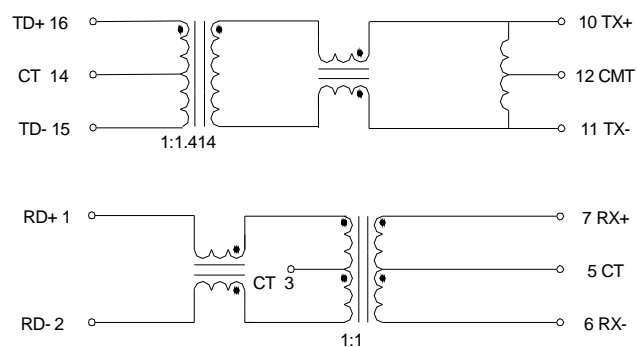
H



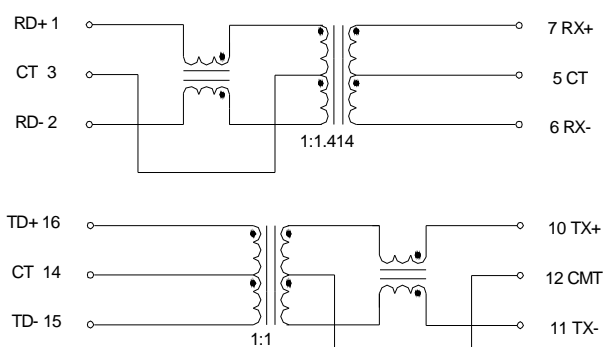
I



J



K



## 10/100BASE TRANSFORMER



### FEATURES

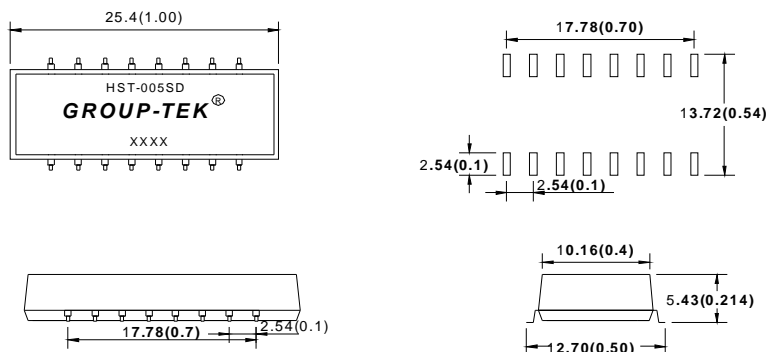
Designed to meet IEEE 802.3 requirements

Primary inductance(Lp)350uH min.

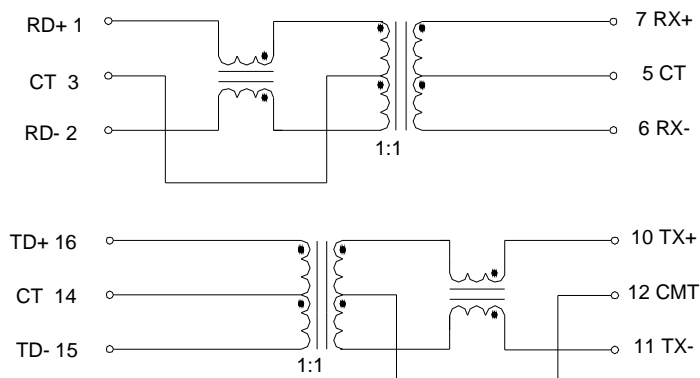
@ 100KHz 0.1Vrms 8mA

Electrical Specification@25			Operating Temperature 0 to 70							
Part No.	Insertion loss (dB max) 1-125MHz	Rise Time (ns typical)	Return loss(dB min)				CMRR		Crosstalk	Isolation Voltage (Vrms min)
			MHz				(dB min .)		(dB min .)	
			1-30	40	50	60-80	1-60	60-100	1-100	
HST-005SD	-1.0	2.5	-18	-16	-16	-12	-36	-33	-38	1500

**Dimension:** mm(inch)+/-0.25(0.01)



### Schematic



**10/100BASE MODUES**

**10/100BASE TRANSFORMER**



**FEATURES**

Designed to meet IEEE 802.3 requirements

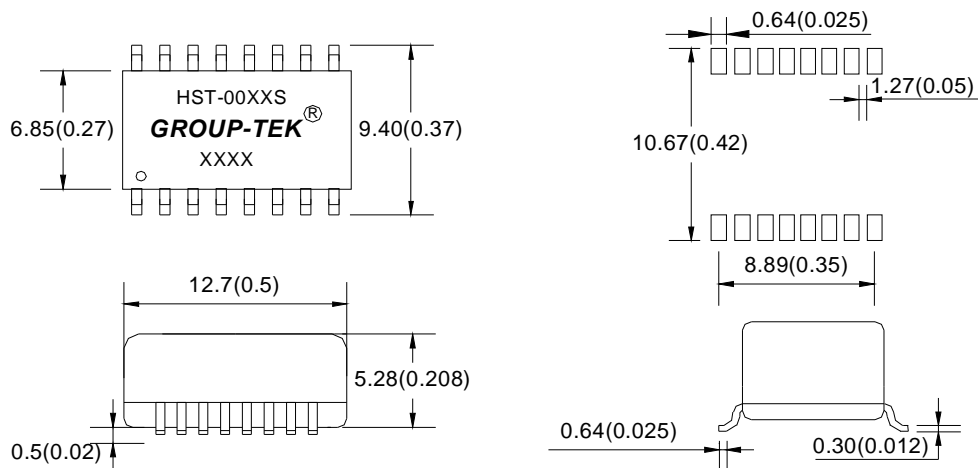
Primary inductance(Lp)350uH min.

@ 100KHz 0.1Vrms 8mA

Hipot:1500Vrms

Electrical Specification@25							Operating Temperature 0 to 70						
Part No.	Turns Ratio		Insertion loss (dB max)	Return loss (dB typical .)			Differential to Common Mode Rejection			Crosstalk			Schematic
				MHz			(dB typ)						
	TX	RX	100KHz-100MHz	30MHz	60MHz	80MHz	30MHz	50MHz	100MHz	30MHz	60MHz	100MHz	
HST-0041S	1:1	1:1	1.1	-20	-14	-11.5	-42	-37	-33	-45	-40	-35	A
HST-0042S	1:1	1:1	1.0	-18	-14	-12	-40	-40	-40	-35	-35	-35	B
HST-0043S	1:1.414	1:1	1.1	-18	-12	-11.5	-42	-37	-30	-45	-40	-35	A
HST-0044S	1:1	1:1	1.1	-20	-14	-11.5	-42	-37	-33	-45	-40	-35	C

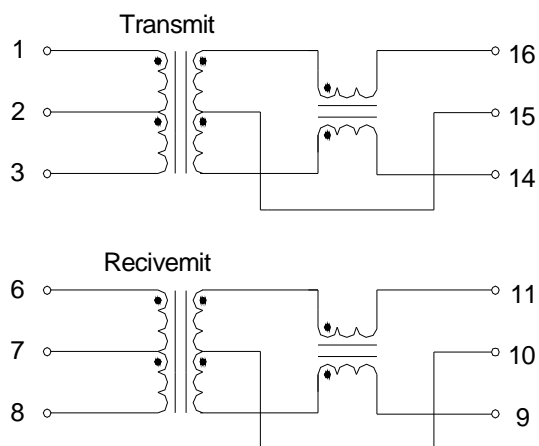
**Dimension:** mm(inch)+/-0.25(0.01)



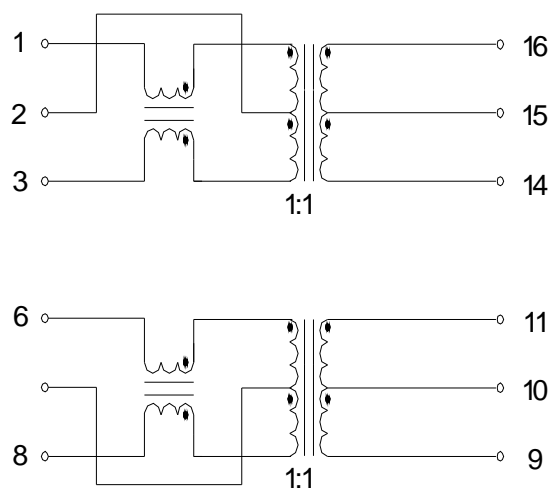
## 10/100BASE TRANSFORMER

### Schematic

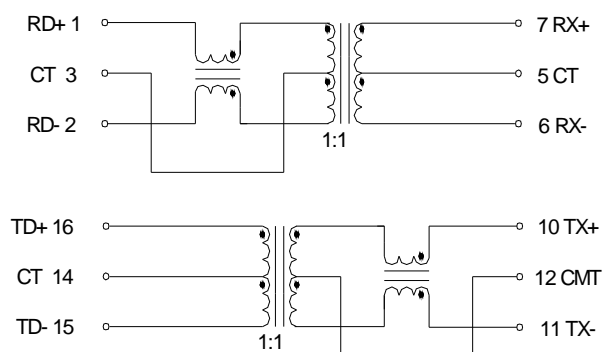
A



B



C



## 10/100BASE MODUES

## 10/100BASE TRANSFORMER

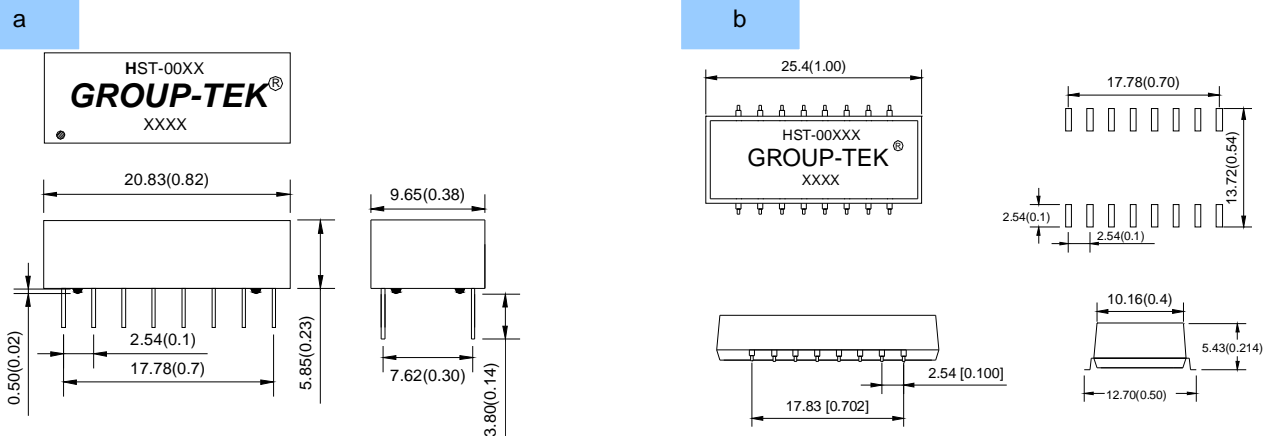
### FEATURES



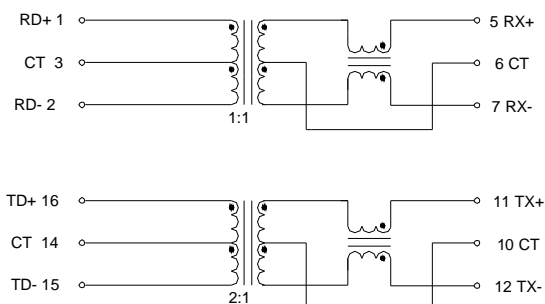
Designed to meet IEEE 802.3 requirements  
 Designed to meet IR Requirement  
 Primary inductance(Lp):Pin(1-2)=350uH min  
 Pin(16-15)=1.4mH min  
 Turn Ratio:Pin(1-2)=1CT:1CT.Pin(16-15)=2CT:1CT

Electrical Specification@25					Operating Temperature 0 to 70					
Part No.	Insertion loss (dB max) 1-125MHz	Rise Time (ns typical)	Return loss (dB typical .) MHz		CMRR (dB min .) MHz		Crosstalk (dB min .) MHz		Isolation Voltage (Vrms min)	Package
			0.1-60	60-100	0.1-60	60-100	0.1-60	60-100		
HST-006D	-1.1	2.5	-18TX	-13TX	-42TX	-40TX	-40	-38	1500	a
			/-17RX	/-15RX	/-40RX	/-35RX				
HST-006S	-1.1	2.5	-18TX	-13TX	-42TX	-40TX	-40	38	1500	b
			/-17RX	/-15RX	/-40RX	/-35RX				

**Dimension:** mm(inch)+/-0.25(0.01)



### Schematic





## 10/100BASE TRANSFORMER



### FEATURES

Designed to meet IEEE 802.3 requirements

Primary inductance(Lp): Pin(1-2)=350uH min

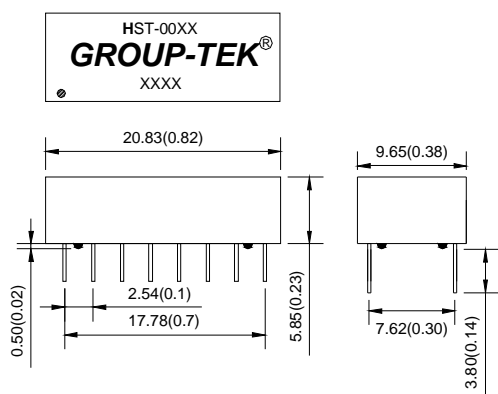
Pin(16-15)=1.0mH min

Turn Ratio:RX=1CT:1CT,TX=1.41CT:1CT

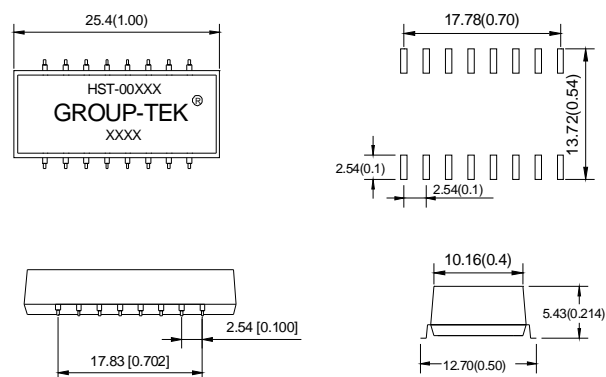
Electrical Specification@25					Operating Temperature 0 to 70				
Part No.	Insertion loss (dB max) 1-125MHz	Rise Time (ns typical)	Return loss (dB typical .) MHz		CMRR (dB min.) MHz		Crosstalk (dB min .) MHz		Isolation Voltage (Vrms min)
			0.1-60	60-100	0.1-60	60-100	0.1-60	60-100	
HST-008D	-1.1	2.5	-18TX /-17RX	-13TX /-15RX	-42TX /-40RX	-40TX /-35RX	-40	-38	1500
HST-008S	-1.1	2.5	-18TX /-17RX	-13TX /-15RX	-42TX /-40RX	-40TX /-35RX	-40	-38	1500

**Dimension:** mm(inch)+/-0.25(0.01)

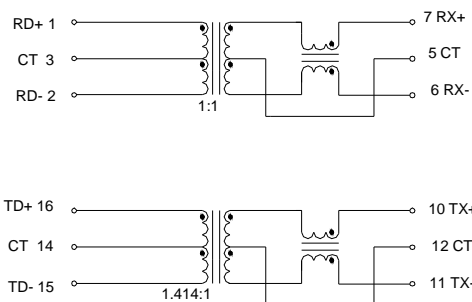
HST-008D



HST-008S



### Schematic



## 10/100BASE MODUES

## 10/100BASE TRANSFORMER

### FEATURES



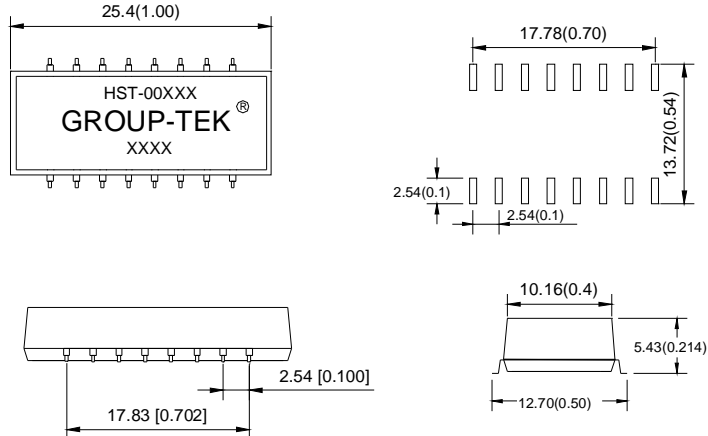
Designed to meet IEEE 802.3 requirements

Designed to meet IR Requirement

Environmental :At 250 for 1 minute

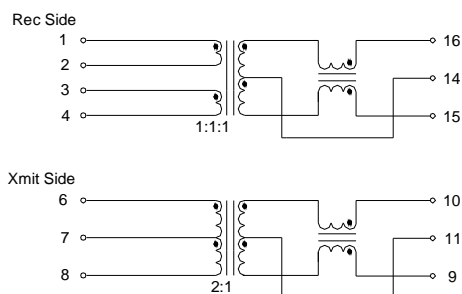
Electrical Specification@25				Operating Temperature 0 to 70				
Part No.	Insertion Loss (dB max) 1-125MHz	Return loss (dB typical .) MHz		CMRR (dB min.) MHz		Crosstalk (dB min .) MHz		Isolation Voltage (Vrms min)
		0.1-60	60-100	0.1-60	60-100	0.1-60	60-100	
HST-009S	-1.1	-18TX	-13TX	-42TX	-40TX	-40	-38	1500
		/-17RX	/-15RX	/-40RX	/-35RX			
HST-010S	-1.1	-18TX	-13TX	-42TX	-40TX	-40	-38	1500
		/-17RX	/-15RX	/-40RX	/-35RX			

**Dimension:** mm(inch)+/-0.25(0.01)

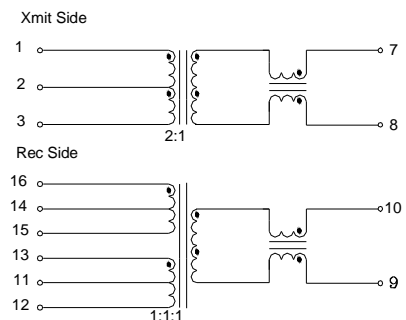


### Schematic

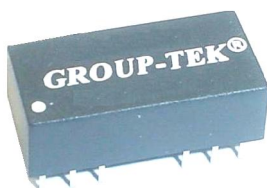
#### HST-009S



#### HST-010S



## 100BASE TRANSFORMER



### FEATURES

Designed to meet IEEE 802.3 requirements

7Pin Sip package

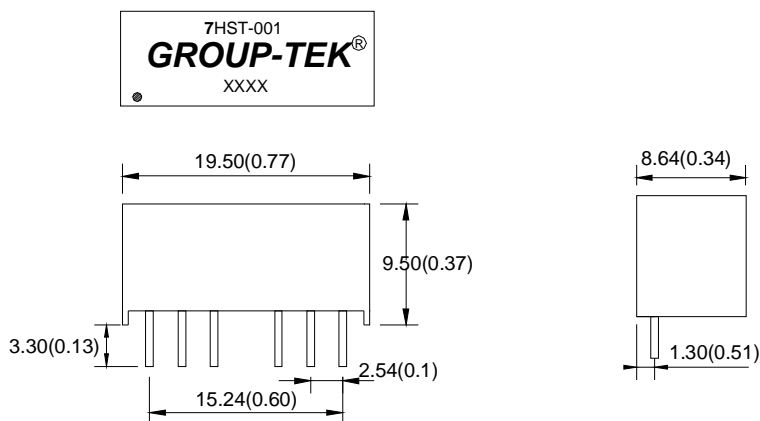
Primary inductance(Lp):350uH min.@ 100KHz 0.1Vrms 8mA

Turn Ratio:1CT:1CT

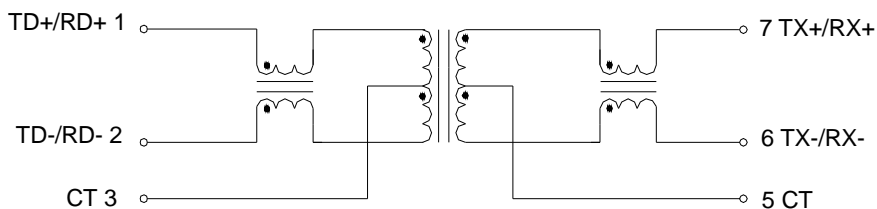
Electrical Specification@25				Operating Temperature 0 to 70					
Part No.	Insertion loss (dB max) 1-125MHz	Rise Time (ns typical)	Return loss (dB typical) MHz		CMRR (dB min.) MHz		Crosstalk (dB min.) MHz		Isolation Voltage (Vrms min)
			0.1-60	60-100	0.1-60	60-100	0.1-60	60-100	
7HST-001	-1.1	2.5	-16	-14	-45	-40	NA	NA	1500

**Dimension:** mm(inch)+/-0.25(0.01)

7HST-001D



### Schematic



## 10/100BASE TRANSFORMER



### FEATURES

Designed to meet IEEE 802.3 requirements .

Primary inductance(Lp)350uH min.@ 100KHz 0.1Vrms 8mA

Electrical Specification@25			Operating Temperature 0 to 70							
Part No.	Insertion loss (dB max) 0.1-100MHz	Rise Time (ns typical)	Return loss (dB typical .) MHz			CMRR (dB min .) MHz		Crosstalk (dB min .) MHz		Isolation Voltage (Vrms min)
			1-30	60	80	1-60	60-100	1-60	60-100	
HST-1601D	-1.1	2.5	-18	16	-13	-40	-35	-40	-38	1500

**Dimension:** mm(inch)+/-0.25(0.01)

**Schematic**

