

ZBM

www.sh-jingkong.com

2010-2011



52PAxxxGF/57BYGH

PLANET GEAR STEPPER MOTOR

Housing Material: Metal

Backlash at No-Load: $\leq 1.5^\circ$

Bearing at Output: Ball or Sleeve

Permissible Overhung Load: $\leq 20\text{kg}$

Permissible Thrust Load: $\leq 10\text{kg}$

Max.Radial Play: $\leq 0.05\text{mm}$

Max.Thrust Play: $\leq 0.3\text{mm}$

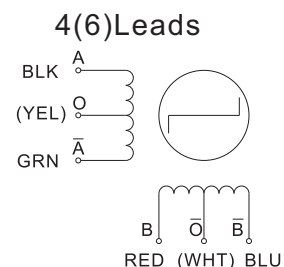
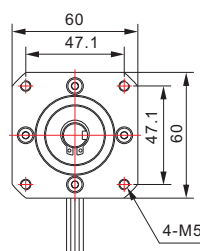
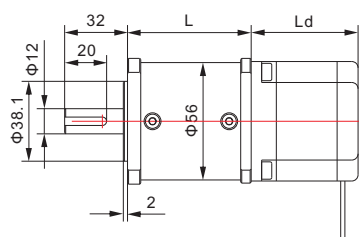
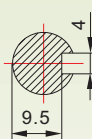
Gear Box Data

Number of Stage	#	1		2						3					
Exact Reduction Ratio	1:X	4	8	16	25	32	50	64	100	128	200	256	312.5	400	512
Efficiency	%	90%		81%						73%					
Max Permissible Torque	Nm	6		12						24					
Moment Permissible Torque	NM	12		24						44					
Gear Box Length (L)	mm	49.5		64.5						79.5					

Motor specifications

Model	Step Angle	Length (Ld)	Phase Voltage	Phase Current	Phase Resistance	Phase Inductance	Holding Torque	Lead Wire
	($^\circ$)	(mm)	(V)	(A)	(Ω)	(mH)	(kg.cm)	(#)
57BYGH41(M)-144-4A/B	1.8/0.9	41	4.1	1.44	2.85	5.4	4	4
57BYGH51(M)-144-4A/B	1.8/0.9	51	4.74	1.44	3.3	8.2	9	4
57BYGH56(M)-100-6A/B	1.8/0.9	56	7	1.00	7.6	10	9	6
57BYGH56(M)-280-4A/B	1.8/0.9	56	2.52	2.80	0.9	2.5	12.5	4
57BYGH76(M)-200-6A/B	1.8/0.9	76	5	2.00	2.25	3.6	13.5	6
57BYGH76(M)-280-4A/B	1.8/0.9	76	3.16	2.80	1.13	3.6	18.9	4

Mechanical Dimensions



56

Frame size
56=Φ56mm

PA

Planetary

025G

Gear Ratio
025=25:1

F /

F = SQ.
Endbell

57

Motor size
57=57X57

BYGH

Hybrid Motor

41

Body Length
41=41mm

144

Phase Current
144=1.44A

4A/B

#leads 4=4leads
Shaft A=single
B=double