

PLEASE CHECK WWW.MOLEX.COM FOR LATEST PART INFORMATION

Part Number:

0039281023

Status:

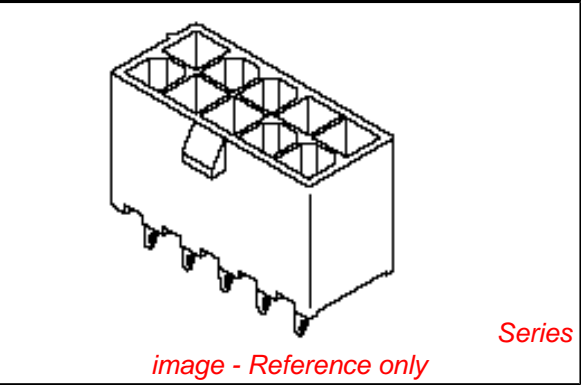
Active

Overview:

minifit_jr

Description:

4.20mm (.165") Pitch Mini-Fit Jr.™ Header, Dual Row, Vertical, without Snap-in Plastic Peg PCB Lock, 2 Circuits, PA Polyamide Nylon 6/6 94V-2, Tin (Sn) Plating, without Drain Holes



Documents:

3D Model

Drawing (PDF)

RoHS Certificate of Compliance (PDF)

Agency Certification	
CSA	LR19980
TUV	R72081037
UL	E29179
General	
Product Family	PCB Headers
Series	5566
Application	Wire-to-Board
Comments	Current = 13A max. per circuit when header is mated to a receptacle loaded with 45750 Mini-Fit Plus HCS™ Crimp Terminal Crimped to to 16 AWG wire. . See Molex product specification PS-45750-001 for additional current de-rating information.. Glow Wire Equivalent Part Number 50361882. Square Pin, Solder Type
MolexKits	Yes
Overview	minifit_jr
Product Name	Mini-Fit Jr.™

Physical	
Breakaway	No
Circuits (Loaded)	2
Circuits (maximum)	2
Color - Resin	Natural
Durability (mating cycles max)	30
First Mate / Last Break	No
Flammability	94V-2
Glow-Wire Compliant	No
Guide to Mating Part	No
Keying to Mating Part	None
Lock to Mating Part	Yes
Material - Metal	Brass
Material - Plating Mating	Tin
Material - Plating Termination	Tin
Material - Resin	Nylon
Number of Rows	2
Orientation	Vertical
PC Tail Length (in)	0.138 In
PC Tail Length (mm)	3.50 mm
PCB Locator	Yes
PCB Retention	None
PCB Thickness Recommended (in)	0.062 In
PCB Thickness Recommended (mm)	1.60 mm
Packaging Type	Bag
Pitch - Mating Interface (in)	0.165 In

EU RoHS

ELV and RoHS

Compliant

REACH SVHC

Contains SVHC: No

Halogen-Free

Status

Halogen-Free

China RoHS



Need more information on product environmental compliance?

Email productcompliance@molex.com

For a multiple part number RoHS Certificate of Compliance, [click here](#)

Please visit the [Contact Us](#) section for any non-product compliance questions.

Search Parts in this Series

5566Series

Mates With

5557 Mini-Fit Jr.™ Receptacle Housing

Pitch - Mating Interface (mm)	4.20 mm	www.D9192P66140.com
Pitch - Term. Interface (in)	0.165 In	
Pitch - Term. Interface (mm)	4.20 mm	
Plating min: Mating (µin)	35	
Plating min: Mating (µm)	0.90	
Plating min: Termination (µin)	100	
Plating min: Termination (µm)	2.50	
Polarized to Mating Part	Yes	
Polarized to PCB	Yes	
Shrouded	Fully	
Stackable	No	
Surface Mount Compatible (SMC)	No	
Temperature Range - Operating	-40°C to +105°C	
Termination Interface: Style	Through Hole	
Electrical		
Current - Maximum per Contact	13A	
Voltage - Maximum	600V	
Material Info		
Old Part Number	5566-02A	
Reference - Drawing Numbers		
Packaging Specification	PK-5566, SPK-5566-002	
Product Specification	RPS-5557-028, RPS-5557-029	
Sales Drawing	SD-5566-002, SD-5566-NA**-*	

This document was generated on 06/08/2010

PLEASE CHECK WWW.MOLEX.COM FOR LATEST PART INFORMATION

CIRCUIT SIZE	DIM. "A"	DIM. "B"
2	.21 (5.4)	—
4	.38 (9.6)	.17 (4.2)
6	.54 (13.8)	.33 (8.4)
8	.71 (18.0)	.50 (12.6)
10	.87 (22.2)	.66 (16.8)
12	1.04 (26.4)	.83 (21.0)
14	1.20 (30.6)	.99 (25.2)
16	1.37 (34.8)	1.16 (29.4)
18	1.54 (39.0)	1.32 (33.6)
20	1.70 (43.2)	1.49 (37.8)
22	1.87 (47.4)	1.65 (42.0)
24	2.03 (51.6)	1.82 (46.2)

LEGEND

BASE NUMBER 5566 - N * * * * *
 CIRCUIT SIZE
 ASS'Y TYPE
 A : WITHOUT DRAIN HOLES
 B : WITH DRAIN HOLES
 TERMINAL MATERIAL
 SEE NOTE 1
 TERMINAL PLATING
 SEE NOTE 2
 HOUSING MATERIAL
 SEE NOTE 1
 COLOR OR PACKAGING
 BL : BLACK RE : RED GR : GRAY
 BU : BLUE YE : YELLOW GRE : GREEN
 TA : TRAY PACKAGING SEE NOTE 4

NOTES:

1. MATERIALS:

HOUSING:

'BLANK'=NYLON 6/6, UL94V-2, COLOR: NATURAL
 '210'=NYLON 6/6, UL94V-0, COLOR: NATURAL
 '400'=NYLON 6/6, UL94V-0, COLOR: BLACK

TERMINALS:

'BLANK' = BRASS
 'PB' = PHOSPHOR BRONZE

2. TERMINAL PLATING:

'BLANK' = BRIGHT TIN .000035/(0.00090) MIN.
 OVER COPPER .000020/(0.00050) MIN. (BRASS)
 TIN .000035/(0.00090) MIN. REFLOW TREATMENT
 OR BRIGHT TIN .000035/(0.00090) MIN. (PHOSPHOR BRONZE)
 'S'=.000100/(0.00254) MIN. BRIGHT TIN OVER
 .000050/(0.00127) MIN. NICKEL

'GS2'=.000015/(0.00038) MIN. SELECT GOLD AND
 .000100/(0.00254) MIN. SELECT MATTE TIN
 OVER .000050/(0.00127) MIN. NICKEL OVERALL
 'GS'=.000030/(0.00076) MIN. SELECT GOLD AND
 .000100/(0.00254) MIN. SELECT MATTE TIN
 OVER .000050/(0.00127) MIN. NICKEL OVERALL

3. PRODUCT SPECIFICATION: PS-5556-001

4. PACKAGING: 'BLANK'= BULK PACKED, 'TA'=TRAY PACK PER PK-5556-001

5. PART MATES WITH MINI-FIT JR. RECEPTACLE NO. 5557.

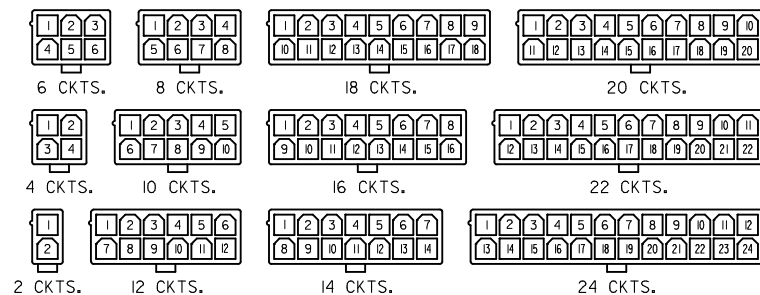
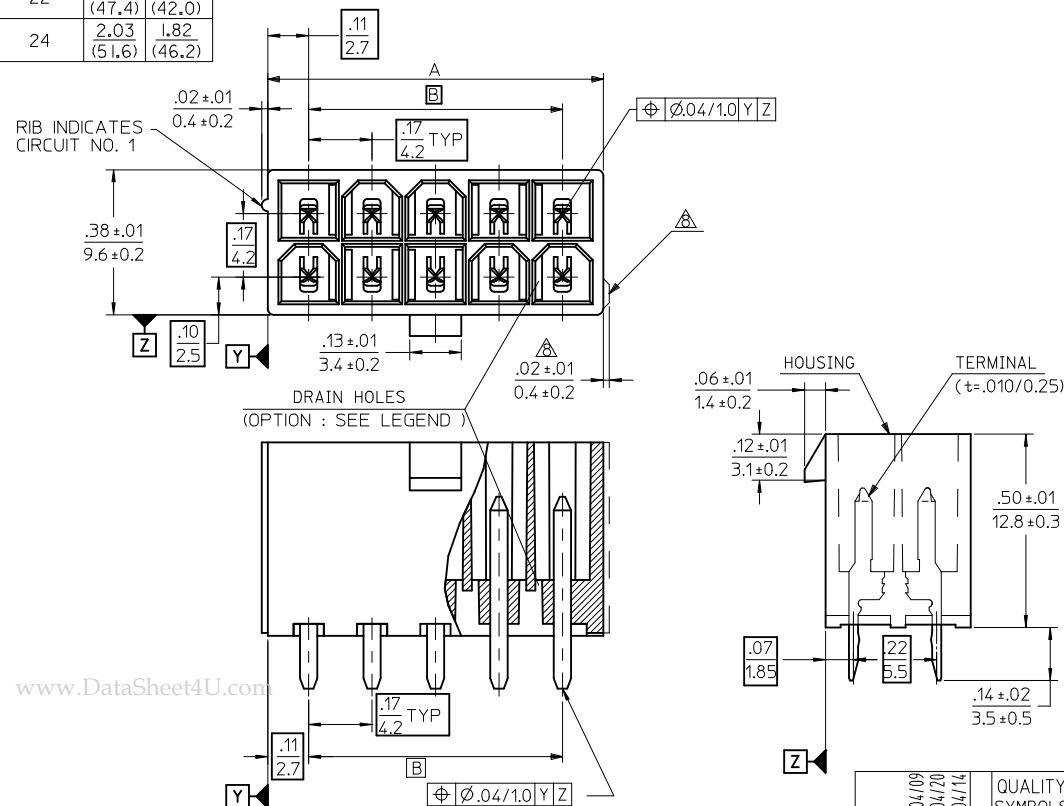
6. PART IS NOT DESIGNED FOR CURRENT SHARING.

7. PARTS ARE NOT DESIGNED TO BE MATED OR UN-MATED

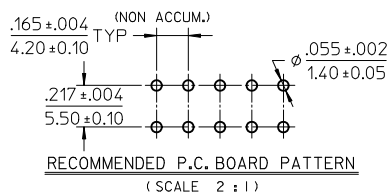
WHILE CIRCUITS ARE LIVE.

8. ANTI-SHINGLING RIB MAY OR MAY NOT APPEAR ON HOUSINGS.

9. PART CONFORMS TO CLASS "B" REQUIREMENTS OF COSMETIC SPECIFICATION PS-45499-002.



CIRCUIT SIZE LAYOUT



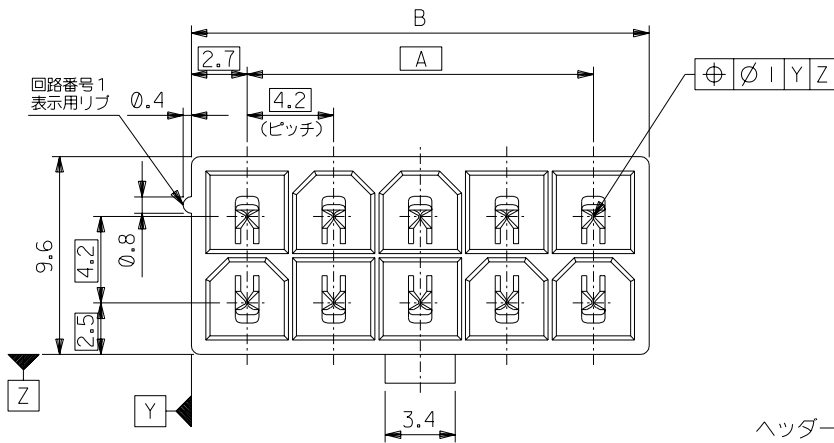
CORRECTED PN		QUALITY SYMBOLS		GENERAL TOLERANCES (UNLESS SPECIFIED)		DIMENSION STYLE		SCALE		DESIGN UNITS		THIRD ANGLE PROJECTION	
EC NO: UCP2010-2614		DESCRIPTION		mm		IN/MM		4:1		METRIC		MATERIAL NO.	
2010/04/09		DRAWN: JAGUILAR		± .005		H. HIRAMOTO		DATE		DATE		TITLE	
2010/04/14		CHKD: J. BELL		± .010		M. FUKUSHIMA		'89/04/03		'94/04/20		NEW MINI FIT CONNECTOR	
		APPR: FSMITH		± .025		M. FUKUSHIMA		'94/04/20				HEADER HOUSING ASS'Y	
				ANGULAR ± 3 °								-LEAD FREE-	
												MOLEX INCORPORATED	
												SEE TABLE	
												SD-5566-002	
												SHEET NO. 6	
												THIS DRAWING CONTAINS INFORMATION THAT IS PROPRIETARY TO MOLEX INCORPORATED AND SHOULD NOT BE USED WITHOUT WRITTEN PERMISSION	

	10	9	8	7	6	5	4	3	2	1	
F	39-29-5247	5566-24APB-2 IO	39-30-9245	5566-24AGS2-2 IO	39-29-6248	5566-24AGS-2 IO	39-30-6242	5566-24AS-2 IO	39-28-8240	5566-24A-2 IO	24
	▲ -5227	▲ -22APB-2 IO	▲ -9225	▲ -22AGS2-2 IO	▲ -6228	▲ -22AGS-2 IO	▲ -6222	▲ -22AS-2 IO	▲ -8220	▲ -22A-2 IO	22
	-5207	-20APB-2 IO	-9205	-20AGS2-2 IO	-6208	-20AGS-2 IO	-6202	-20AS-2 IO	-8200	-20A-2 IO	20
	-5187	-18APB-2 IO	-9185	-18AGS2-2 IO	-6188	-18AGS-2 IO	-6182	-18AS-2 IO	-8180	-18A-2 IO	18
	-5167	-16APB-2 IO	-9165	-16AGS2-2 IO	-6168	-16AGS-2 IO	-6162	-16AS-2 IO	-8160	-16A-2 IO	16
	-5147	-14APB-2 IO	-9145	-14AGS2-2 IO	-6148	-14AGS-2 IO	-6142	-14AS-2 IO	-8140	-14A-2 IO	14
	-5127	-12APB-2 IO	-9125	-12AGS2-2 IO	-6128	-12AGS-2 IO	-6122	-12AS-2 IO	-8120	-12A-2 IO	12
	-5107	-10APB-2 IO	-9105	-10AGS2-2 IO	-6108	-10AGS-2 IO	-6102	-10AS-2 IO	-8100	-10A-2 IO	10
	-5087	-08APB-2 IO	-9085	-08AGS2-2 IO	-6088	-08AGS-2 IO	-6082	-08AS-2 IO	-8080	-08A-2 IO	8
	-5067	-06APB-2 IO	-9065	-06AGS2-2 IO	-6068	-06AGS-2 IO	-6062	-06AS-2 IO	-8060	-06A-2 IO	6
E	▼ -5047	▼ -04APB-2 IO	▼ -9045	▼ -04AGS2-2 IO	▼ -6048	▼ -04AGS-2 IO	▼ -6042	▼ -04AS-2 IO	▼ -8040	▼ -04A-2 IO	4
	39-29-5027	5566-02APB-2 IO	39-30-9025	5566-02AGS2-2 IO	39-29-6028	5566-02AGS-2 IO	39-30-6022	5566-02AS-2 IO	39-28-8020	5566-02A-2 IO	2
	EDP NO.	ENG. NO.	EDP NO.	ENG. NO.	EDP NO.	ENG. NO.	EDP NO.	ENG. NO.	EDP NO.	ENG. NO.	CKT. SIZE
	5566-NAPB-2 IO		5566-NAGS2-2 IO		5566-NAGS-2 IO		5566-NAS-2 IO		5566-NA-2 IO		
	39-29-5246	5566-24APB	39-30-9244	5566-24AGS2	39-29-0243	5566-24AGS	39-30-6241	5566-24AS	39-28-1243	5566-24A	24
	▲ -5226	▲ -22APB	▲ -9224	▲ -22AGS2	▲ -0223	▲ -22AGS	▲ -6221	▲ -22AS	▲ -1223	▲ -22A	22
	-5206	-20APB	-9204	-20AGS2	-0203	-20AGS	-6201	-20AS	-1203	-20A	20
	-5186	-18APB	-9184	-18AGS2	-0183	-18AGS	-6181	-18AS	-1183	-18A	18
	-5166	-16APB	-9164	-16AGS2	-0163	-16AGS	-6161	-16AS	-1163	-16A	16
	-5146	-14APB	-9144	-14AGS2	-0143	-14AGS	-6141	-14AS	-1143	-14A	14
D	-5126	-12APB	-9124	-12AGS2	-0123	-12AGS	-6121	-12AS	-1123	-12A	12
	-5106	-10APB	-9104	-10AGS2	-0103	-10AGS	-6101	-10AS	-1103	-10A	10
	-5086	-08APB	-9084	-08AGS2	-0083	-08AGS	-6081	-08AS	-1083	-08A	8
	-5066	-06APB	-9064	-06AGS2	-0063	-06AGS	-6061	-06AS	-1063	-06A	6
	▼ -5046	▼ -04APB	▼ -9044	▼ -04AGS2	▼ -0043	▼ -04AGS	▼ -6041	▼ -04AS	▼ -1043	▼ -04A	4
	39-29-5026	5566-02APB	39-30-9024	5566-02AGS2	39-29-0023	5566-02AGS	39-30-6021	5566-02AS	39-28-1023	5566-02A	2
	EDP NO.	ENG. NO.	EDP NO.	ENG. NO.	EDP NO.	ENG. NO.	EDP NO.	ENG. NO.	EDP NO.	ENG. NO.	CKT. SIZE
	5566-NAPB		5566-NAGS2		5566-NAGS		5566-NAS		5566-NA		

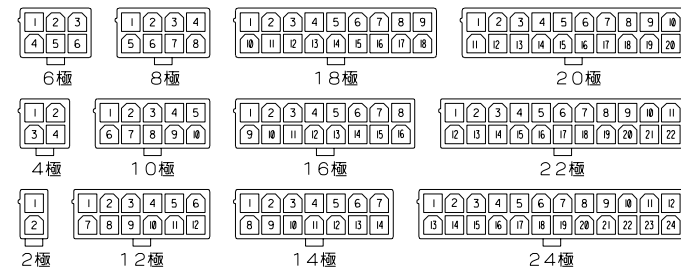
PARTS WITH OUT DRAIN HOLES

www.DataSheet4U.com

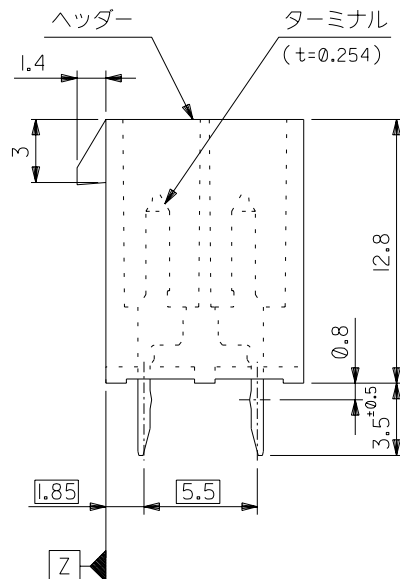
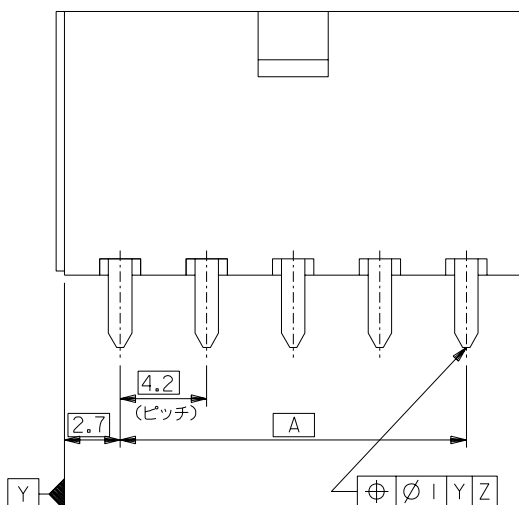
REVISED EC NO: UCP2010-1083 DRWN: JAGUILAR CHKD: JELL APPR: FSMITH L2	DESCRIPTION 2010/02/05 2010/02/08 2010/02/10	GENERAL TOLERANCES (UNLESS SPECIFIED)		DIMENSION STYLE IN/MM		SCALE ---	DESIGN UNITS METRIC	THIRD ANGLE PROJECTION		
		10 UNDER	± ---	H. HIRAMOTO	DATE '89/04/03	TITLE NEW MINI FIT CONNECTOR HEADER HOUSING ASS'Y -LEAD FREE-				
		10 OVER 30 UNDER	± ---	M. FUKUSHIMA	DATE '94/04/20					
		30 OVER	± ---	M. FUKUSHIMA	DATE '94/04/20	MOLEX INCORPORATED				
		ANGULAR ± --- °		MATERIAL NO.						
		DRAFT WHERE APPLICABLE MUST REMAIN WITHIN DIMENSIONS		SEE TABLE		SD-5566-002			2 OF 6	
	REV	THIS DRAWING CONTAINS INFORMATION THAT IS PROPRIETARY TO MOLEX INCORPORATED AND SHOULD NOT BE USED WITHOUT WRITTEN PERMISSION								



51.6	46.2	24
47.4	42	22
43.2	37.8	20
39	33.6	18
34.8	29.4	16
30.6	25.2	14
26.4	21	12
22.2	16.8	10
18	12.6	8
13.8	8.4	6
9.6	4.2	4
5.4	—	2
寸法 B	寸法 A	極数



極数別レイアウト図
(SCALE 1:1)



注 記

1. 嵌合相手 : 5557シリーズ

2. 使用符号の説明

ベースナンバー 5566 - N A * * - *

極数

アッセンブリ

ターミナル材料

"BLANK" : 黄銅

PB : リン青銅

ターミナルのメッキ

"BLANK" : 錫メッキ 0.9μm MIN.

GS : ニッケル 1.27μm MIN. 全面下地

コンタクト部 金 0.76μm MIN.

半田付け部 錫 2.54μm MIN.

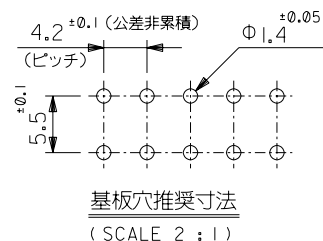
ヘッダー材料

"BLANK" : ナイロン 66, UL 94V-2

210 : ナイロン 66, UL 94V-0

400 : ナイロン 66, UL 94V-0, 黒

www.DataSheet4U.com



				材料 MATERIAL	MOLEX-JAPAN CO.,LTD. 日本モレックス株式会社
				注記 2 参照	
				仕上げ FINISH	注記 2 参照
				適用電線範囲 WIRE RANGE	—
				被覆外径 INS. RANGE	—
				DRAWN BY H.HIRAMOTO	CHK'D BY M.FUKUSHIMA
				APP'D BY M.ENOMOTO	尺 度 SCALE 4 - 1
角度 ANGLE	±3°	F 変更 (J2004-4431)	M.N. K.T.	04/5/26	EDP. NO. SHEET 2 OF 2 参照
30°以上 OVER	±0.4 ±0.3	E 変更 (J00638)	H.H.	00/6/8	
10°以上 30°未満 OVER UNDER	±0.3 ±0.25	D 変更&再作図 (J00510)	H.H. Y.Y.	00/5/7	ENG. NO. SD-5566-NA***
10°未満 UNDER	±0.2	記号 LTR	変更内容 REVISION RECORD	DR. CHK.	REV F
一般公差 GENERAL TOLERANCES				REVISE ONLY ON CAD SYSTEM	
				TITLE 名称 NEW MINI FIT CONNECTOR www.DataSheet4U.com	

		8	7	6	5	4	3	2	1			
ENC. NO SD-5566-NA***-*	EDP NO. 表 参照								39-35-0248	5566-24A-400	24	F
									▲ -0228	▲ -22A-400	22	
									-0208	-20A-400	20	
									-0188	-18A-400	18	
									-0168	-16A-400	16	
									-0148	-14A-400	14	
									-0128	-12A-400	12	
									-0108	-10A-400	10	
									-0088	-08A-400	8	
									-0068	-06A-400	6	
									▼ -0048	▼ -04A-400	4	
									39-35-0028	5566-02A-400	2	
									EDP NO.	ENG. NO	極数	
									5566-NA-400			
		39-29-5247	5566-24APB-210	39-29-6248	5566-24AGS-210	39-28-8240	5566-24A-210	24	E			
		▲ -5227	▲ -22APB-210	▲ -6228	▲ -22AGS-210	▲ -8220	▲ -22A-210	22				
		-5207	-20APB-210	-6208	-20AGS-210	-8200	-20A-210	20				
		-5187	-18APB-210	-6188	-18AGS-210	-8180	-18A-210	18				
		-5167	-16APB-210	-6168	-16AGS-210	-8160	-16A-210	16				
		-5147	-14APB-210	-6148	-14AGS-210	-8140	-14A-210	14				
		-5127	-12APB-210	-6128	-12AGS-210	-8120	-12A-210	12				
		-5107	-10APB-210	-6108	-10AGS-210	-8100	-10A-210	10				
		-5087	-08APB-210	-6088	-08AGS-210	-8080	-08A-210	8				
		-5067	-06APB-210	-6068	-06AGS-210	-8060	-06A-210	6				
		▼ -5047	▼ -04APB-210	▼ -6048	▼ -04AGS-210	▼ -8040	▼ -04A-210	4				
		39-29-5027	5566-02APB-210	39-29-6028	5566-02AGS-210	39-28-8020	5566-02A-210	2				
		EDP NO.	ENG. NO	EDP NO.	ENG. NO	EDP NO.	ENG. NO	極数				
		5566-NAPB-210		5566-NAGS-210		5566-NA-210						
		39-29-5246	5566-24APB	39-29-0243	5566-24AGS	39-28-1243	5566-24A	24	D			
		▲ -5226	▲ -22APB	▲ -0223	▲ -22AGS	▲ -1223	▲ -22A	22				
		-5206	-20APB	-0203	-20AGS	-1203	-20A	20				
		-5186	-18APB	-0183	-18AGS	-1183	-18A	18				
		-5166	-16APB	-0163	-16AGS	-1163	-16A	16				
		-5146	-14APB	-0143	-14AGS	-1143	-14A	14				
		-5126	-12APB	-0123	-12AGS	-1123	-12A	12				
		-5106	-10APB	-0103	-10AGS	-1103	-10A	10				
		-5086	-08APB	-0083	-08AGS	-1083	-08A	8				
		-5066	-06APB	-0063	-06AGS	-1063	-06A	6				
		▼ -5046	▼ -04APB	▼ -0043	▼ -04AGS	▼ -1043	▼ -04A	4				
		39-29-5026	5566-02APB	39-29-0023	5566-02AGS	39-28-1023	5566-02A	2				
		EDP NO.	ENG. NO	EDP NO.	ENG. NO	EDP NO.	ENG. NO	極数				
		5566-NAPB		5566-NAGS		5566-NA						
								C				