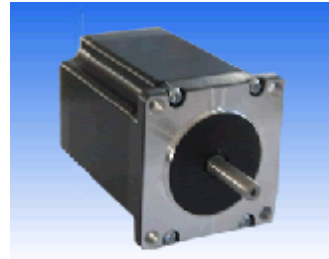


# MERCURY MOTOR

## ST-57BYGH 1.8°HYBRID STEP MOTOR

Dimensions (Unit: Millimeter)

|                      |                       |
|----------------------|-----------------------|
| Step Angle           | 1.8°±5%               |
| Insulation Resistant | 500V DC 100MΩ Min     |
| Insulation Strength  | 50Hz 1Minute 500V Min |
| Ambient Temperature  | -20℃~+50℃             |
| Temperature Rise     | 80℃ Max.              |
| Radial Play          | 0.02mm Max.           |
| End Play             | 0.1-0.3mm             |



### Electrical Specifications

| Model      | Phase Number | Current | Resistance | Inductance | Max.Static torque | Weight | Overall Dimension |        |
|------------|--------------|---------|------------|------------|-------------------|--------|-------------------|--------|
|            |              | (A)     | (Ω)        | (mH)       | (kg.cm)           | (kg)   | L0(mm)            | L1(mm) |
| 57BYGH006  | 4            | 0.34    | 71         | 90         | 4.4               | 0.42   | 41                | 22     |
| 57BYGH007  | 2            | 0.4     | 35.5       | 52         | 5.6               | 0.42   | 41                | 22     |
| 57BYGH008  | 4            | 2       | 1.4        | 1.2        | 4.2               | 0.42   | 41                | 21     |
| 57BYGH103  | 4            | 0.38    | 32         | 38         | 6                 | 0.65   | 50                | 21     |
| 57BYGH104  | 4            | 2.3     | 1.1        | 1.4        | 8.2               | 0.65   | 50                | 21     |
| 57BYGH201  | 2            | 2.5     | 1.1        | 3.6        | 9.8               | 0.65   | 54                | 21     |
| 57BYGH202  | 4            | 3       | 0.75       | 1.2        | 9                 | 0.65   | 54                | 21     |
| 57BYGH207  | 4            | 0.4     | 30         | 60         | 8                 | 0.7    | 56                | 21     |
| 57BYGH208  | 4            | 1.6     | 2.2        | 3.4        | 8                 | 0.65   | 53                | 25.5   |
| 57BYGH211  | 4            | 1.6     | 2.6        | 5          | 9                 | 0.65   | 54                | 21     |
| 57BYGH212  | 2            | 1       | 3.5        | 12.5       | 9                 | 0.65   | 54                | 21     |
| 57BYGH213  | 4            | 1       | 6.2        | 10         | 9                 | 0.65   | 54                | 21     |
| 57BYGH218  | 2            | 1       | 8.2        | 16.8       | 10                | 0.7    | 56                | 31.5   |
| 57BYGH291  | 4            | 2.5     | 1.3        | 4.5        | 8                 | 0.7    | 54                | 21     |
| 57BYGH301  | 2            | 1.4     | 4.2        | 15         | 15                | 1.1    | 76                | 21     |
| 57BYGH302  | 4            | 3       | 1          | 2.1        | 13                | 0.65   | 76                | 21     |
| 57BYGH303  | 4            | 2.3     | 2.5        | 5.3        | 16                | 0.65   | 76                | 21     |
| 57BYGH310  | 2            | 2       | 4.3        | 16.2       | 24                | 1.1    | 76                | 21     |
| 57BYGH311  | 4            | 3       | 1.2        | 2.2        | 15                | 1.1    | 76                | 25.5   |
| 57BYGH315  | 4            | 3       | 1          | 1.6        | 13.5              | 1.1    | 76                | 25.5   |
| 57BYGH316  | 2            | 3       | 1.4        | 3.5        | 18                | 1.1    | 76                | 21     |
| 57BYGH317  | 4            | 2.5     | 1.8        | 3          | 18                | 1.1    | 76                | 21     |
| 57BYGH318  | 2            | 3.3     | 1          | 2          | 18                | 1.1    | 76                | 21     |
| 57BYGH320  | 2            | 0.4     | 38         | 150        | 18                | 1.1    | 76                | 21     |
| 57BYGH323  | 2            | 0.4     | 80         | 18.5       | 16                | 1.1    | 76                | 21     |
| 57BYGH402  | 4            | 2.5     | 2.2        | 3.8        | 18                | 1.5    | 82                | 30     |
| 57BYGH405A | 4            | 3       | 1.2        | 2.4        | 21                | 1.3    | 82                | 21     |
| 57BYGH408  | 2            | 3       | 1.2        | 4          | 21                | 1.5    | 82                | 21     |
| 57BYGH802  | 4            | 1.5     | 3.2        | 5.6        | 9                 | 0.7    | 56                | 21     |
| 57BYGH803  | 4            | 1.5     | 4.2        | 8.5        | 15                | 0.65   | 76                | 21     |

